



Huawei P10 Battery Replacement

This guide shows how to replace the battery in your Huawei P10.

Written By: Dominik Schnabelrauch



INTRODUCTION

Use this guide to replace the battery in your Huawei P10 smartphone.



TOOLS:

- [P2 Pentalobe Screwdriver iPhone](#) (1)
- [SIM Card Eject Tool](#) (1)
- [Spudger](#) (1)
- [iFixit Opening Tools](#) (1)
- [Phillips #00 Screwdriver](#) (1)
- [iOpener](#) (1)
- [iFixit Opening Picks set of 6](#) (1)



PARTS:

- [Huawei P10 and Honor 9 Replacement Battery](#) (1)

Step 1 — Back Cover



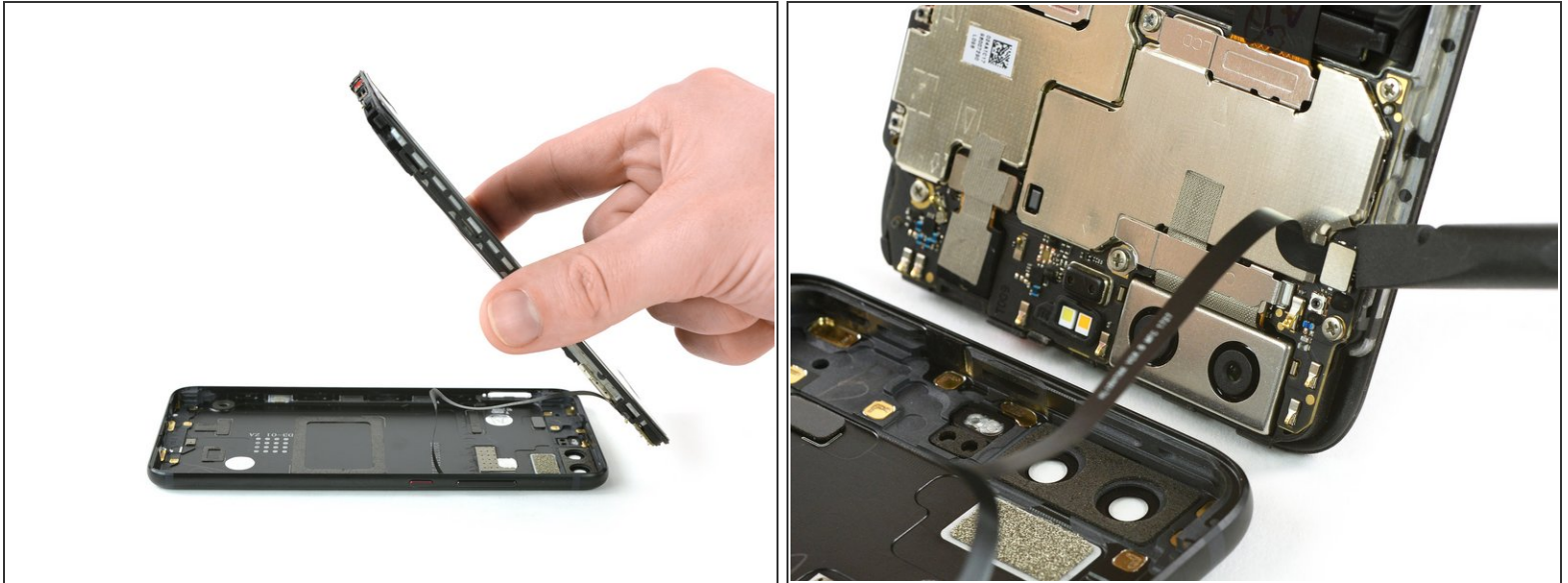
- Switch off your phone.
- Remove the two Pentalobe P2 screws at the bottom.
- Remove the SIM card tray.


Step 2



- Insert a plastic opening tool between the display and the case starting at the bottom area of your phone.
- Carefully pry the display with its parts out of the case.
 - ⓘ Getting the prying tool in will require some effort, be careful not to slide the tool too much or you might slightly damage the housing.
- After you pried out the bottom end, use the opening tool to open the clamps on both sides.

Step 3



 Don't open the phone all the way, yet. The cable for the standby and volume buttons is still connected to the back cover.

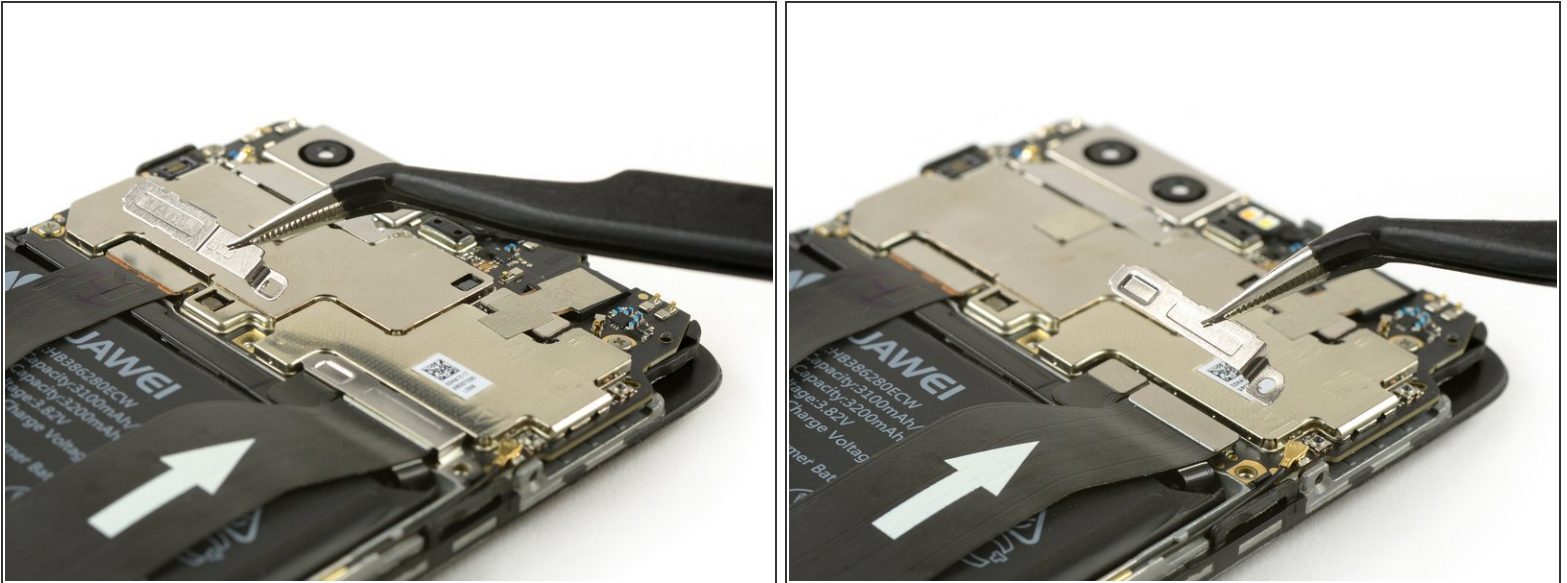
- Swing open the phone backwards.
- Use a spudger to disconnect the power- and volume button flex cable.

Step 4 — Battery



- Remove the two Phillips #00 screws.

Step 5



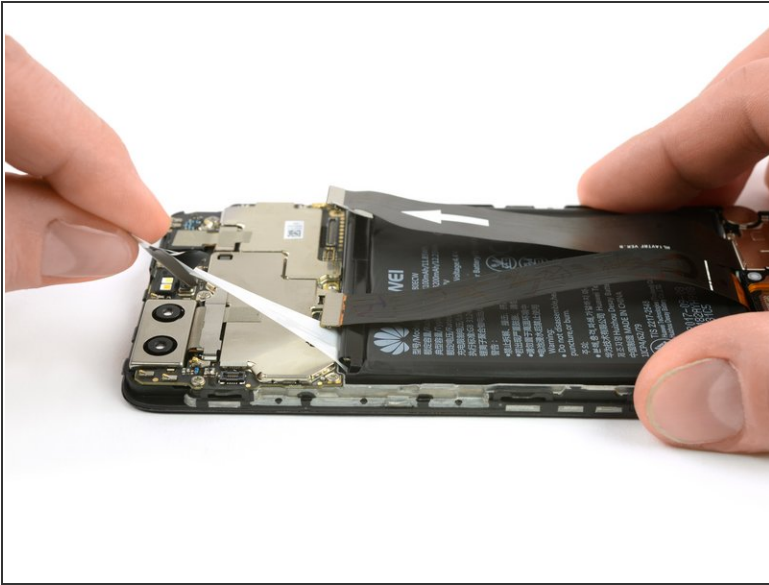
- Use tweezers to remove the two cable brackets.

Step 6



- Use a spudger to disconnect the battery, the interconnect and the display flex cable.

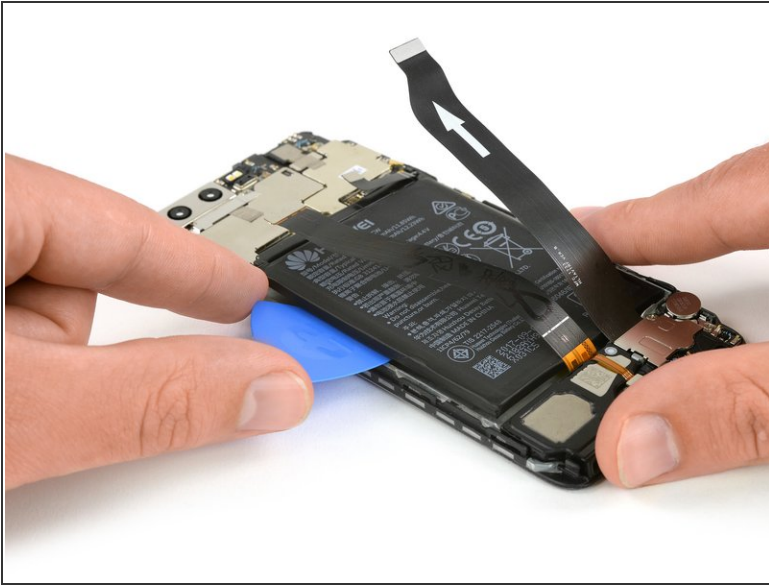
Step 7




- i** The battery is glued in place with two adhesive strips. One with a pull tab and one without.

 - Peel out the adhesive strip which is placed beneath the battery by steadily pulling at the tab in a flat angle.
 - i** It is likely that the adhesive strip rips. In this case you can grab and twist it around a tweezers tip a couple of times and then continue.
 - [Use an iOpener](#) to loosen the remaining adhesive.


Step 8




 Take care to not bend or puncture the battery.

- Insert an opening pick or spudger beneath the battery and carefully pry it out.

- Remove the battery.

 When reassembling your phone replace old adhesive with [double-sided tape](#) or [pre-cut adhesive strips](#).

 Never reinstall a battery that has been bent or damaged during removal.

To reassemble your device, follow these instructions in reverse order. When reassembling your phone apply new adhesive where it is necessary.